



# Craft the Vision: Urban Forest Community Workshop

**Titusville Urban Forest Management Plan**

**11.10.25**



## Our Team Here Today



**Liz Lingo**

Consultant and  
Project Manager



**Paola Nansel**

Assistant Urban  
Forestry Consultant



**Cassidy Behnke**

Inventory Arborist

## Our Approach

Building relationships with trees,  
people and their community.



Providing Leading Environmental Services

**900+**  
Employees

**300**  
Clients

*100% Employee Owned Company*

**200+**  
Certified  
Arborists

**25**  
Years In  
Business



Tree Inventories  
Consulting

Canopy Analysis  
Management Plans





# Tonight's Purpose...

## Why We Are Here:

Share what we've learned about Titusville's trees

Hear YOUR vision for the City's urban forest

Build a plan together for Titusville's future



# The Journey

20+ Years of Collective Effort



**Foundation (2001-2010)** → Tree City USA | Public landscape trust fund  
**Action (2020-2022)** → Canopy study | Tree ordinance passed  
**Momentum (2023-2024)** → Community plans | Sustainability goals |  
Grant funding secured

## Why Is This Step Important?

- Your Dedication + Professional Expertise
- Building something that will be a guiding light & basis of future decision making

Every effort has been a building block – this pathway is what will help build a dynamic urban forest program



# Urban Forest Plan Overview

- Tree Canopy Assessment
- Tree Planting Assessment
- Community Engagement  
TODAY!  
FlashVote  
Draft Plan Comment Period
- Urban Forest Plan Development
- Final Plan Presentation

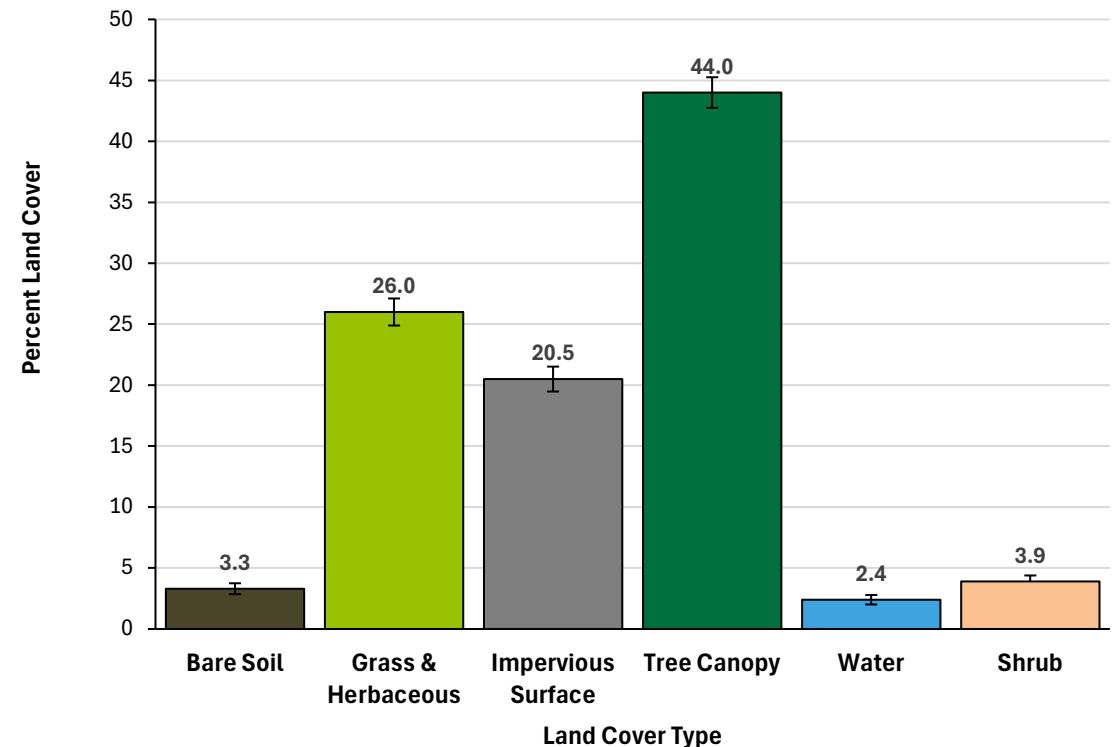
Project funding provided by USDA Forest Service through the Florida Department of Agriculture and Consumer Services



# Land Cover - 2023

- High resolution imagery from 2023
- Canopy further broken down by planning units, census blocks, and stormwater basins
- Indian River Lagoon was not included in these calculations
- 2021 study = 42-43% tree canopy

## Tree Canopy: 44.0% (42.7-45.3%)

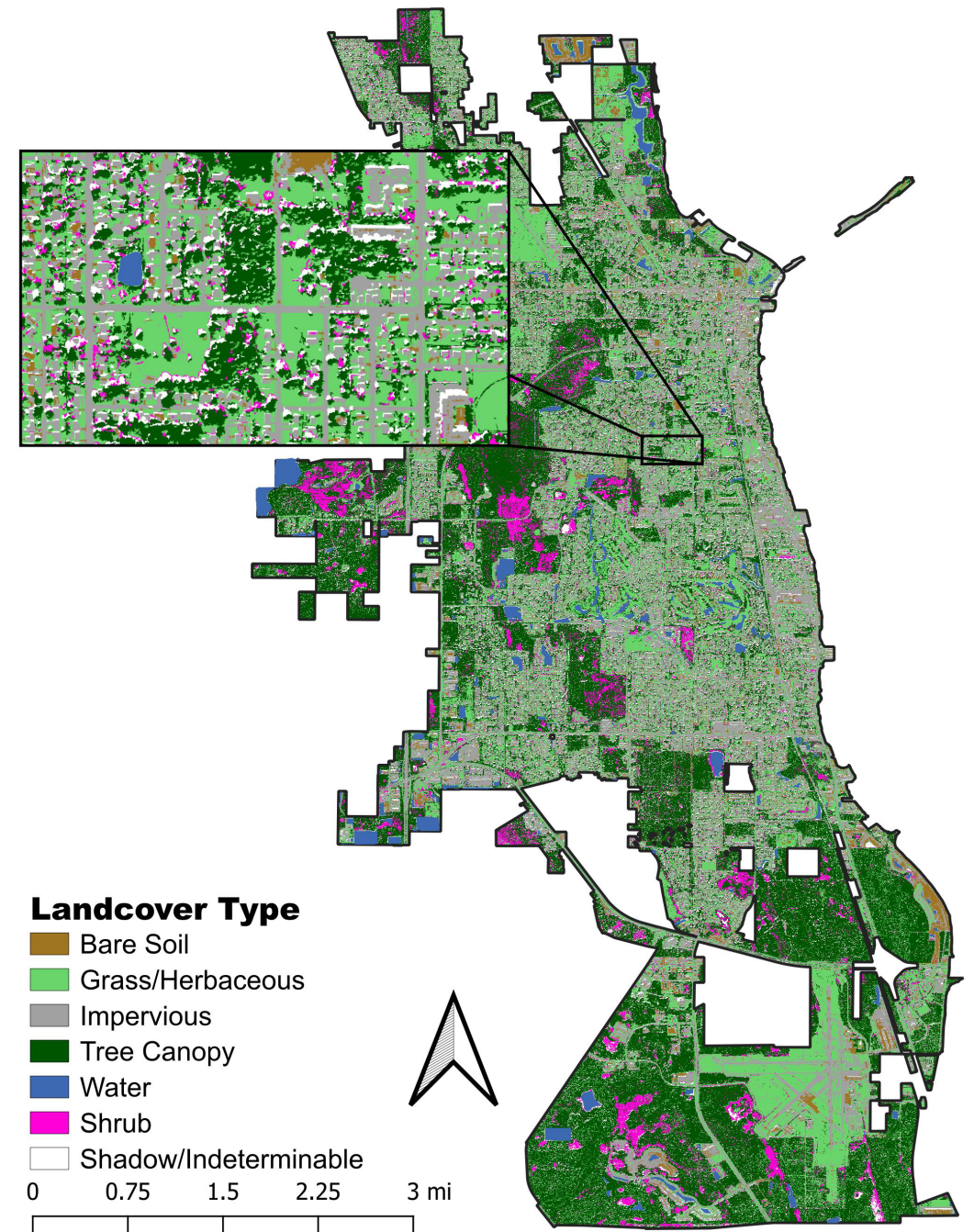
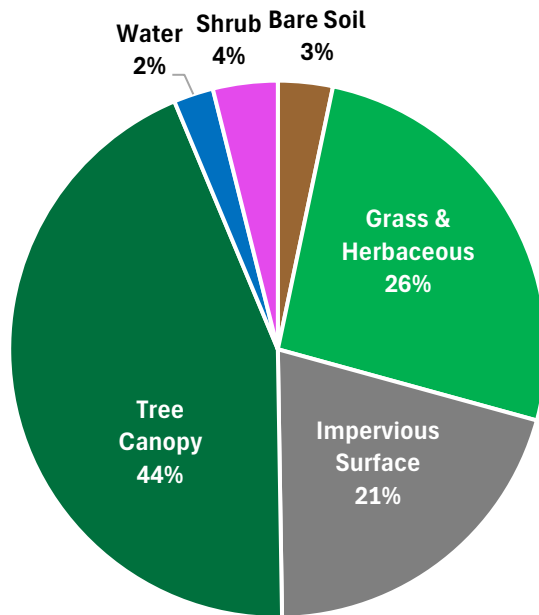




## Titusville Tree Canopy: 44.0% (2023)

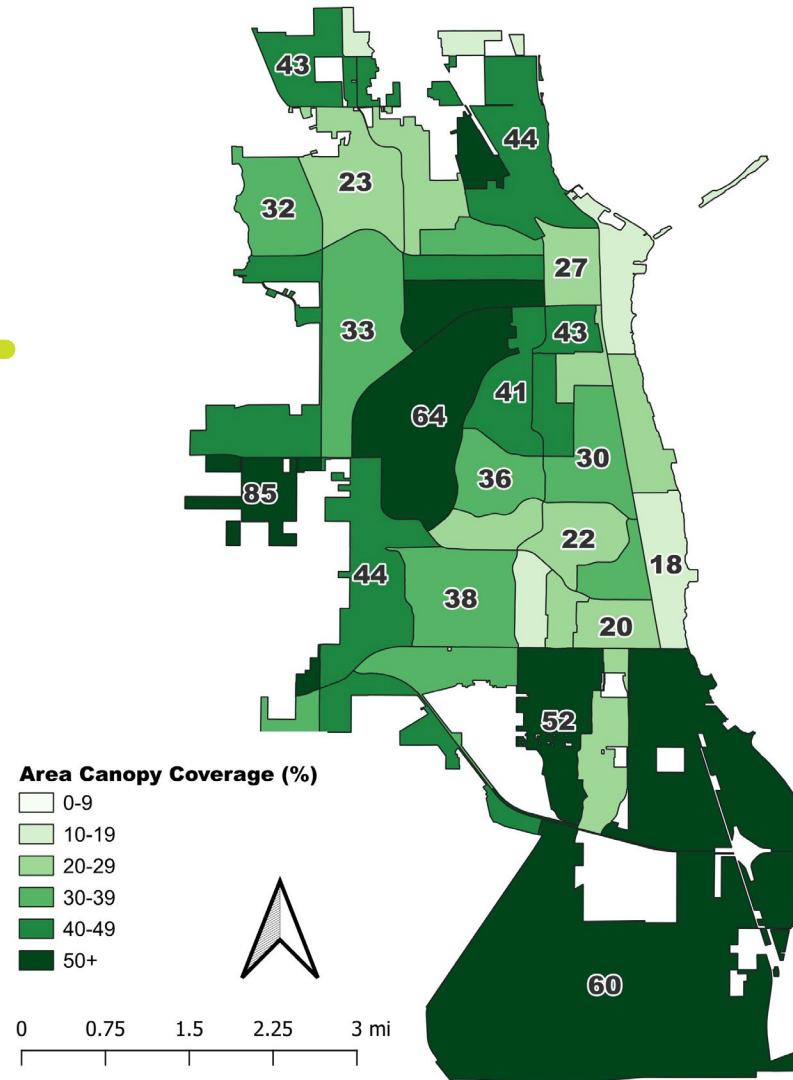
State of Florida: 36% (2021)

East Central Florida: 32% (2021)

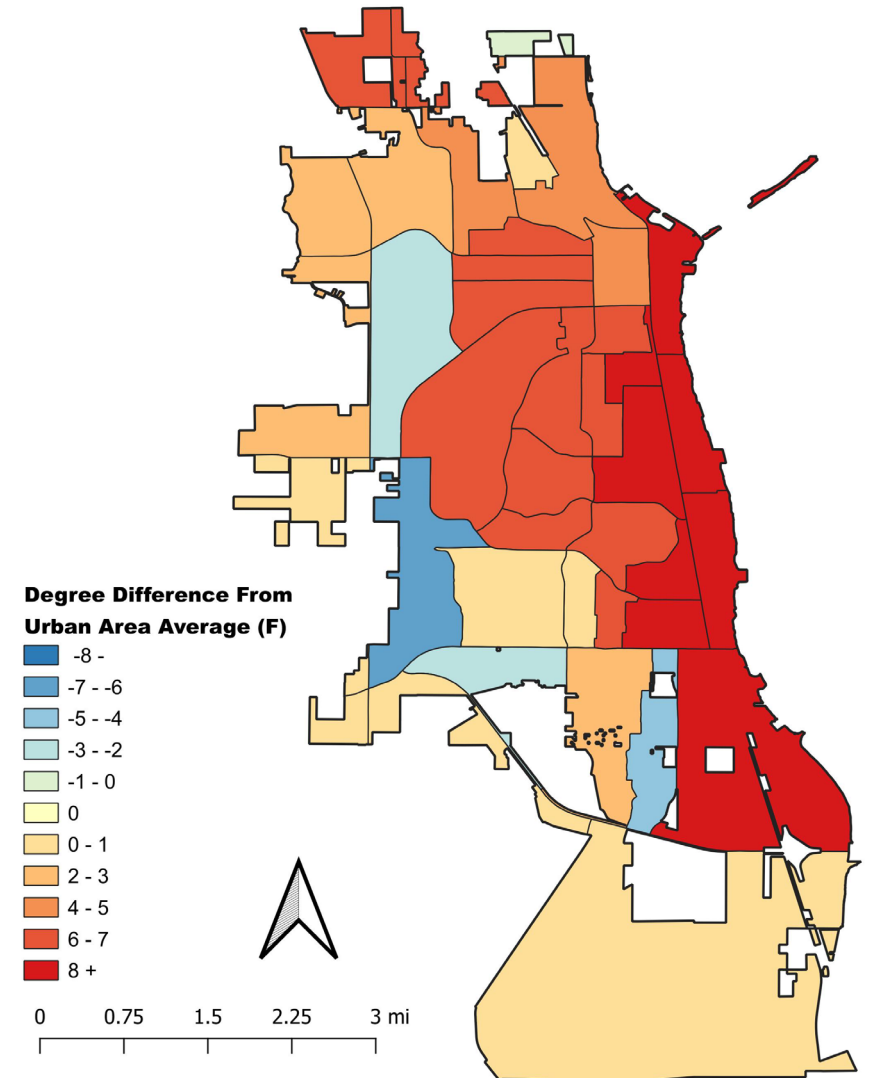


# Heat & Tree Canopy

**Census Block Tree Canopy Coverage**  
Titusville, Florida



**Heat Index by Census Block**  
Titusville, Florida





# Potentially Plantable



Bare Soil (3%) + Grass & Herbaceous Vegetation (26%)



= 29% **Maximum** Planting Area



NEXT - eliminate non-plantable areas based on setbacks from buildings, utilities, other trees, and other criteria





# Survey Results – What You Told Us

**89.6% rated trees as Extremely or Very Important**

## TOP PRIORITIES:

69% - Shade & Cooling

48% - Wildlife Habitat

31% - Air Quality

30% - Beauty & Character

21% - Water Management

## INDIAN RIVER LAGOON

The Indian River Lagoon (IRL) is 156 mile long estuary where salt water from the Atlantic mixes with freshwater from the land and tributaries which results in brackish (slightly salty) water. The lagoon watershed covers 2,284 square miles and the Lagoon's waters span 353 square miles.

The IRL is considered one of the most biologically diverse estuaries in North America. It is home to more than 2,100 different species of plants and 2,200 animal species, including over 700 fish species and 300 bird species.

The health of the IRL is declining due to various reasons, including manmade hydrologic changes and non-point source pollution.

### Ways YOU Can Help Improve Water Quality within the IRL

- \* Reduce fertilizer use and use products that don't contain nitrogen or phosphorus.
- \* Place yard waste in containers for pick up, not on the curb or roadway.
- \* Vegetate bare areas of your lawn.
- \* Wash your car at a car wash or on your lawn, not in the driveway.
- \* Pick up dog waste and dispose of it in the trash.
- \* Never blow or sweep yard waste into the curb or street.
- \* Don't dump anything down storm drains.
- \* Use rain barrels and rain gardens to capture runoff and reuse the water for irrigation.
- \* Have your septic tank pumped and inspected regularly, consider options for connecting to the sewer system.
- \* Never apply fertilizers or pesticides right before it rains.
- \* Use Florida Friendly Landscaping that requires less fertilizer and irrigation.







# Survey Results – Your Concerns

## TOP CONCERNS

73% - Extreme Heat

70% - Development Impacts

64% - Flooding

55% - Water Quality

43% - Hurricane Damage

**Key Theme:** Building resilience for future generations

# Your Priorities

## **WHAT YOU WANT TO SEE:**

Shade Trees (78%) and Native Trees (78%)

## **WHERE YOU WANT TREES:**

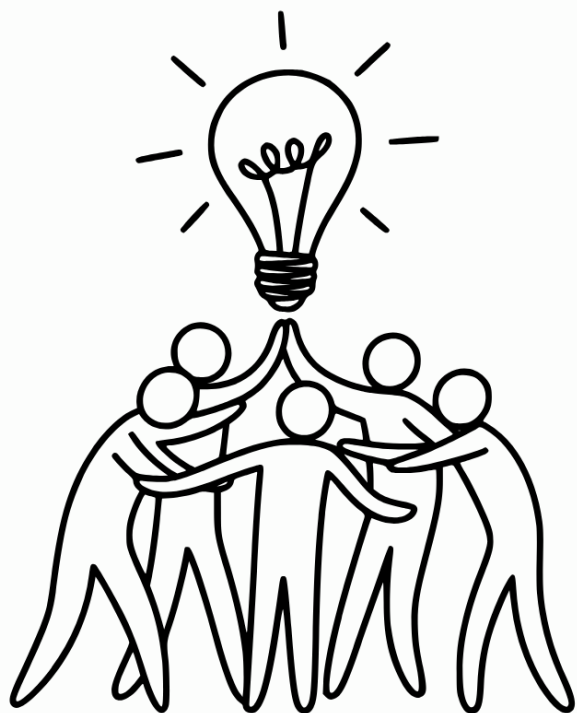
In the Right Of Way – between sidewalk and street (46%)

## **READY FOR ACTION:**

Want Maximum Tree Preservation (64%)

Would Plant Trees with \$\$\$ Incentive (75%)





# Tonight's Activity

## **Your Task: Create a Vision Statement**

Break into small groups

Discuss values and priorities

Draft inspiring vision for Titusville's urban forest

Share and vote on favorites

**YOUR VISION WILL GUIDE THE PLAN!**

# Example Visions

Citizens of Syracuse will enjoy a high quality of life through an abundant, resilient and safe urban forest that is integrated into city-wide planning and our everyday lives.

---

Our vision is to create a thriving, inclusive urban forest that protects heritage, enhances the environment, improves stormwater management, and delivers measurable, sustainable outcomes for the community of Tarpon Springs.

---

Miami-Dade seeks to create a greener, more walkable, livable community through expanded urban canopy.

# Let's Get Started!

Time to break into groups

Your facilitator will guide you

*Remember: There are no wrong answers - we want YOUR vision!*







# VOTE NOW!

Choose only ONE



*If you're have technical issues, raise your hand*



# Your Voice – Community Vote



Top 2-4 go to all  
community members  
via FlashVote for a  
quick poll



Vote should be  
available in ~1  
week



Results shared  
publicly





# How Your Vision Guides the Plan

**Every strategy, goal, action recommendation – “Does this advance our vision”**

- Budget priorities
- Program development
- Metrics of Success

**Example:** Vision mentions “resilient shade” → Plan prioritizes storm resistant canopy trees







# Thank You!

## PROJECT CONTACTS

**Eocene:** Liz Lingo | [elingo@eocene.com](mailto:elingo@eocene.com) | 302.493.7417

**Titusville:** Lily Galleo | [Lily.Galleo@titusville.com](mailto:Lily.Galleo@titusville.com) | 321.567.3779



**PROJECT  
WEBSITE**

